

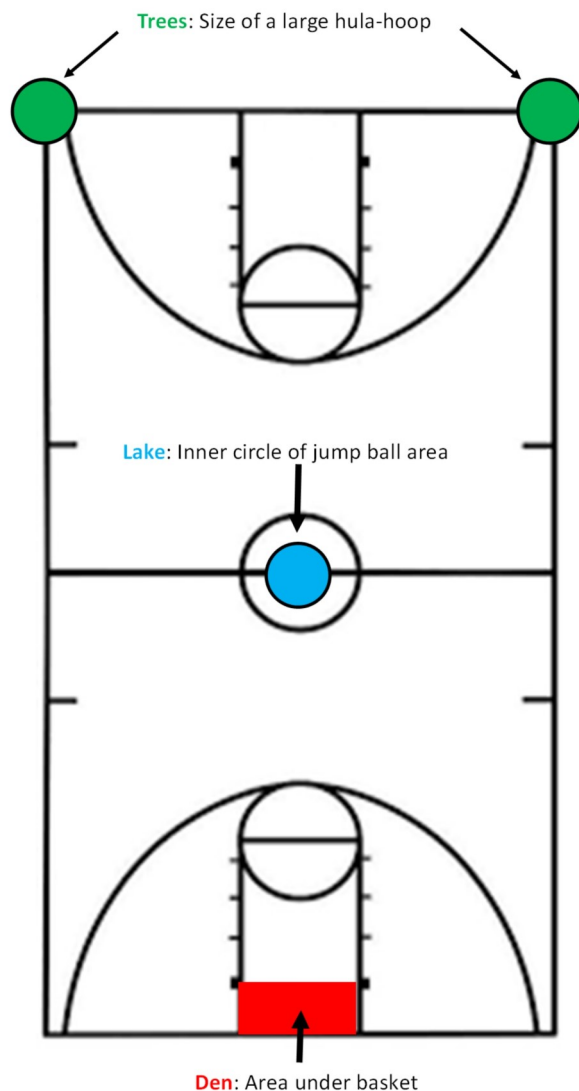
Indoor Bearball™

Bearball has been adapted to be played indoors. The rules are essentially the same, except for a few small differences.

There is no Bagged Bear due to an out of bounds area.

A Dead Stone only occurs under one of the following circumstances.

- A.** The ball goes into an area not part of the gym proper, such as, a hallway or locker room
- B.** The ball gets stuck in an area such as bleachers or hanging obstruction.
- C.** The Warden's decision based in accordance with the rules of regular outdoor play.



To the left is the layout for safety areas to play Bearball in a gymnasium where a basketball court is marked.